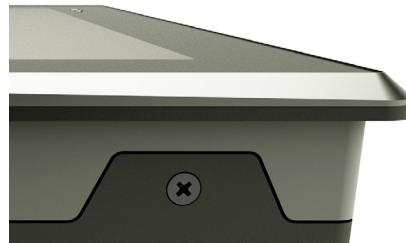
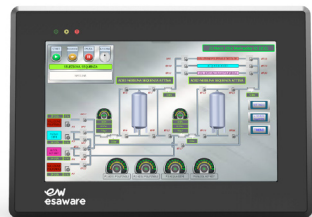


Esaware HMI

Control made easy

EW100 is the new generation of HMIs based on a modern, powerful architecture that combines visualization, supervision and control of your applications.

Esaware HMI products fully exploit the potential of the Windows Embedded Compact 7 operating system, the only solution that offers transparent interconnection with any company system together with the well-known reliability of the embedded operating systems.



Our Esaware HMI solutions have a widescreen display that can be dimmed up to 100%, and they offer up to 40% more viewing surface compared to a traditional 4:3 display. In addition LED backlit displays excel in durability thanks to a significant energy saving.

In Esaware HMI, esthetics and functionality become one, thanks to the innovative design "Twist": an inclined surface that prevents the retention of dust and other corrosive substances. Safety and durability are further enhanced by a robust aluminum case with PTFE, non-stick, coating.

Our standard HMI for visualization, control with Remote Maintenance Platform.

- Operating System Windows Embedded Compact 7 Pro
- Preloaded Everyware runtime
- SNTP Server and Client
- Aluminum Front Side PTFE coating
- True Flat Touch Screen
- Status leds on front
- CPU Arm Cortex A8 1 GHz
- Ram DDR3
- Internal Memory 3 Gbyte
- SDHC v2.0 (up to 25 Mbyte/s)
- High Bright 16 Millions Colors Display

Features	EW104AA	EW107AA	EW112AA	EW115AA
Display Size	4,3"	7"	12,1"	15,6"
Display Technology	TFT			
Display Colors	262k		16M	
Display Backlight	LED			
Display Brightness (cd/m ²)	400	600	400	300
Display Resolution (pixel)	480 x 272	800 x 480	1280 x 800	1366 x 768
Backlight life (hours)	50k			
Processor	ARM Cortex A8			
RAM	256 MB DDR3		512 MB DDR3	
Flash	3GB			
Serial Ports	SPI RS232/485-MPI-COM0 ; SP2 RS232/485-MPI-COM0 ; CAN ; Profibus			
Ethernet	1 x 10/100Mb		2 x 10/100Mb	
USB Ports	1 x USB Host + 1 x USB Device		2 x USB Host + 1 x USB Device	
Cardbus Slot	1 x SDHC/MMC			
Power Supply (Vdc)	12 - 32			
Consumption (W)	4	7	15	19
Operating Temperature (°C)	-10 ... + 50 (non condensing)			
Storage Temperature (°C)	-20 ... + 65			
Humidity	<90% (non condensing)			
External dimensions (W/H/D) (mm)	166 x 112 x 46 (61 with double port)	202 x 142 x 46	341 x 239 x 49	437 x 286 x 54,5
Cut-out dimensions (W/H) (mm)	158,5 x 104,5	195,0 x 135,0	326,0 x 227,0	422,5 x 271,5
Weight (kg)	0,5	0,8	2,5	4,5
Protection degree (front)	IP66			
Certifications	CE / EN60068-2-6 / EN60068-2-27 / Humidity EN60068-2-30 / cULus (Certificate no. E189179) / EAC / Directive 94/9/EC Atex Group II - Category 3 G-D Zone 2/22			