

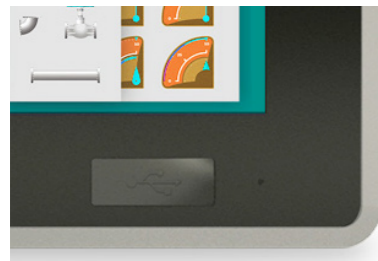


Esaware Industrial Monitor

Innovative design. Elegant technology.

With the EW300 series, Esaware offers a wide range of industrial monitors that combine innovative and elegant design with the highest industrial engineering standards. EW300 Industrial Monitors have been designed to ensure high performance and durable reliability in harshest industrial environments.

All EW300 monitors share the same well designed bezel as the EW200 Panel IPCs.



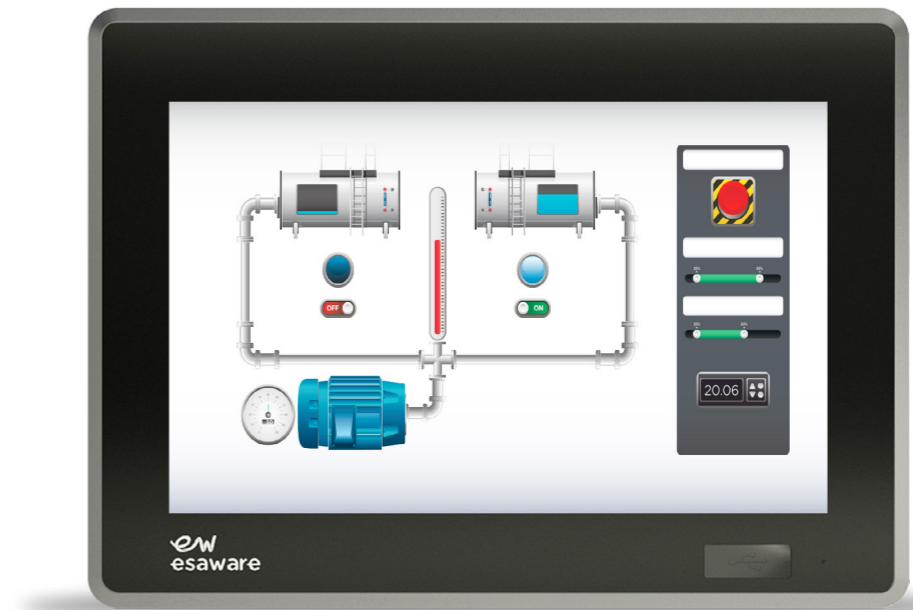
Detail of true-flat touch screen along with twisted aluminum bezel and ATEX IP66 frontal USB port.



Our unique Twist design and the PTFE non-stick coating prevent dust and dirt accumulation on the bezel.

The main features of EW300 Industrial Monitors are:

- LCD wide screen
- Resistive or capacitive touchscreen
- Multi Video inputs
- Multi touchscreen outputs.
- Reduced depth



Features	EW312	EW315	EW318	EW322
Display Size	12,1"	15,6"	18,5"	21,5"
Display Technology	TFT			
Display Colors	16,7M			
Display Brightness (cd/m ²)	400	300		
Contrast	1000	500	1000	5000
Viewing Angle	88/88/88/88	85/85/80/80	85/85/80/80	89/89/89/89
Display Resolution (pixel)	1280x800	1366x768		1920x1080
Backlight life (hours)	50k			
Touch Technology	Resistive (5 wires) / Capacitive (PCT 10 touches)			
Bezel /Chassis	Aluminium - PTFE no-sticking coating / Sheet Steel			
Front USB	1x USB 2.0 type A - rear 1x USB type B			
Rear touch outputs	1x USB 2.0 type B + 1x RS232 sub-din 9pins			
Video input	DVI-D + VGA			
Power Supply (Vdc)	18...30			
Operating Temperature (°C)	0 ... + 50 (non condensing)			
Storage Temperature (°C)	-20 ... + 65			
Humidity	<85% (non condensing)			
External dimensions (W/H/D) (mm)	341x239x58	437x286x58	504x325x61	572x363x61
Cut-out dimensions (W/H) (mm)	326,0x227,0	422,5x271,5	486,5x307,5	554,5x345,5
Weight (kg)	3,5	5	7,5	9,5
Protection degree (front)	IP66			
Certifications	CE - EN61000-6-2 / EN61000-6-4 / EN60068-2-6/27/30 / Atex Group II - Category 3 G-D Zone 2/22			