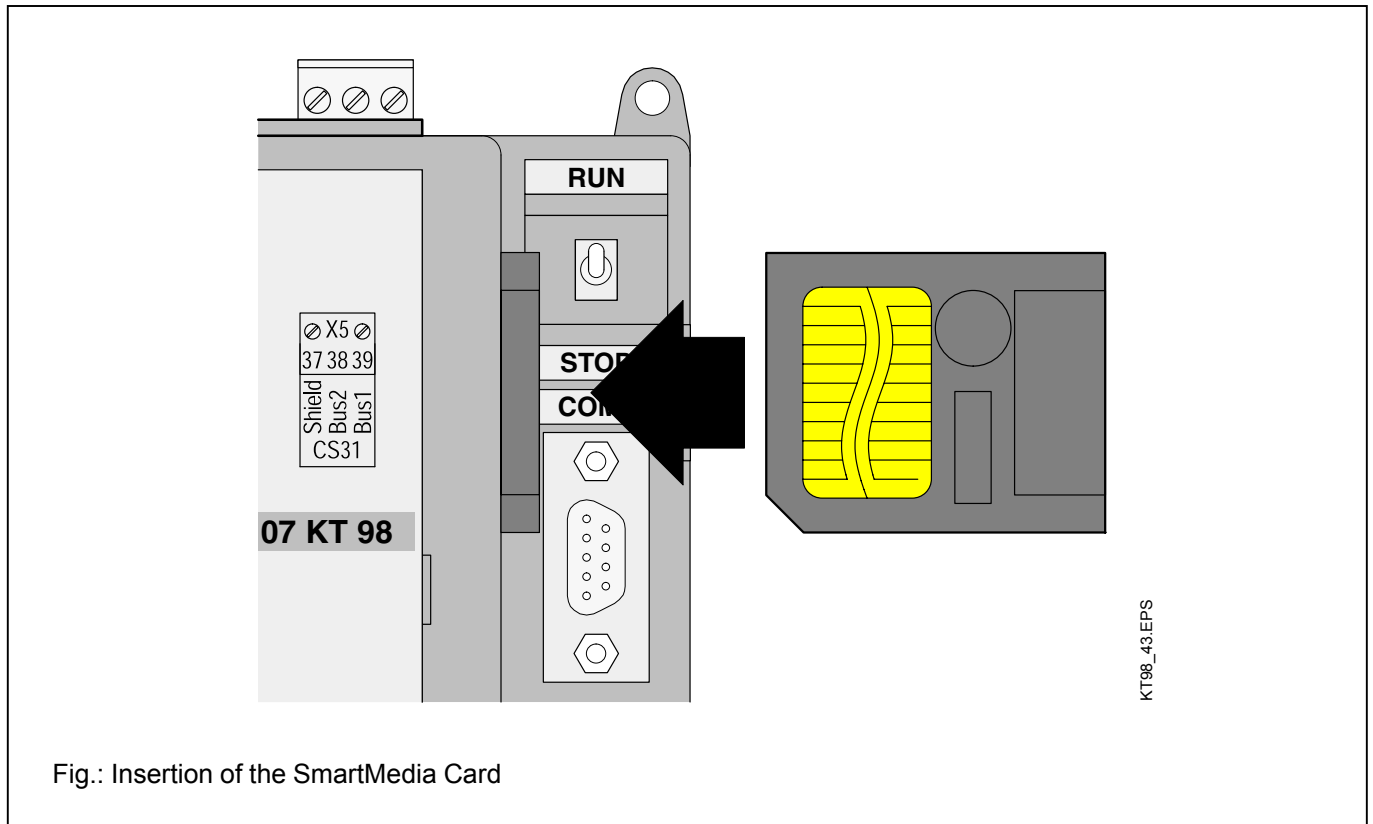


## 11.6 SmartMedia Card 07 MC 90, inserted in 07 KT 95 to 07 KT 98

The SmartMedia Card serves for storing data up to 2 MB or 8 MB not being lost over an power OFF/ON cycle. It is used in the 07 KT 95...98 and 07 SL 97 basic units. It is recommended only to use ABB-proven SmartMedia Cards.

### Field of application

- Storing and loading of PLC programs
- Storing and loading of user data
- Loading of firmware updates



### Handling instructions

- The SmartMedia Card is inserted with the contact field visible (see the figure above).
- A SmartMedia Card, once initialized as user data memory, can no more be used as a user program card.
- The SmartMedia Card must be protected from
  - mechanical stress (e.g. do not bend)
  - electrostatic discharge
  - contact pollution (do not touch the contacts)

### Important note

SmartMedia Cards with a supply voltage of 3.3 V cannot be used with basic units of the versions R01xx. They also cannot be used with 07 SL 97 basic units (see Usability).

### Access

- Access within the PLC program is possible with function blocks, see documentation of the programming software.

### Usability

SmartMedia Card 07 MC 90 **5 V** GJR5 2526 00 **R0101** (supply voltage 5 V, usable with the basic units 07 SL 97, 07 KT 95 to 07 KT 98 **R 01xx** and **R02xx**, all firmware versions, memory capacity 2 MB)

SmartMedia Card 07 MC 90 **3,3 V** GJR5 2526 00 **R0201** (supply voltage 3.3 V, usable with the basic units 07 KT 95 to 07 KT 98 **R02xx** with firmware versions as of V5.0, memory capacity 8 MB)

### Technical data

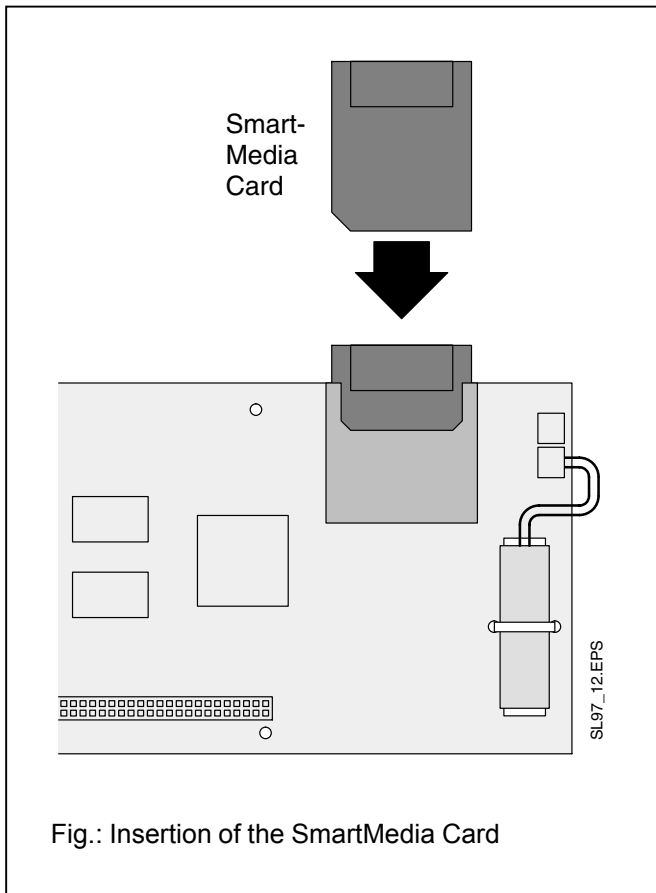
Weight	2 g
Dimensions	45 x 37 x 0.7 mm

### Order numbers

07 MC 90	5 V	2 MB	GJR5 2526 00 <b>R0101</b>
07 MC 90	3.3 V	8 MB	GJR5 2526 00 <b>R0201</b>

## 11.7 SmartMedia Card 07 MC 90, inserted in 07 SL 97

The SmartMedia Card serves for storing data up to 2 MB to protect them against being lost while the power is off. It is inserted into the basic unit 07 SL 97. It is recommended only to use ABB-proven SmartMedia Cards.



### Field of application

- Storing and loading of PLC programs
- Storing and loading of user data
- Loading of firmware updates

### Handling instructions

- **Observe the instructions of the PC manufacturer before opening the PC housing!**
- Insert or remove the SmartMedia Card only with the slot PLC switched off.
- The SmartMedia Card must be inserted with the contact field upwards (contacts are visible, see figure above).
- After a SmartMedia Card has been initialized once as user data memory it cannot be used any more as an user program card.
- The SmartMedia Card has to be protected against
  - mechanical damages (e.g. do not bend)
  - electrostatic discharge
  - contact pollution (do not touch the contacts)

### Important note

SmartMedia Cards with a supply voltage of 3.3 V, e.g. GJR5 2526 **R0201**, cannot be used with 07 SL 97 basic units.

### Access

- The SmartMedia Card can be accessed within the PLC program via function blocks. Refer to the documentation of the programming software 907 AC 1131.

### Technical data

Weight 2 g

Dimensions 45 x 37 x 0.7 mm

Order number

07 MC 90 5 V 2 MB GJR5 2526 00 **R0101**